

GO LEFT, GO RIGHT MODEL
MODEL#: INTELLI-INCH-LR

NOTES:

- SPEED CAN BE SET BY THE ON BOARD POT, OR THE POT REMOVED AND AN ANALOG 0-5V SIGNAL FED IN
- ACCELERATION CAN BE CHANGED BY CHANGING A FIXED RESISTOR ON THE PCB
SEE PAGE 3 FOR DETAILS
- THE LIMIT SWITCHES SHOULD BE NORMALLY CLOSED
- DRIVE CAN BE MODIFIED FOR 2 AMPS, BUT WILL REQUIRE BOLTING AGAINST A HEATFIN OR ALUMINUM PLATE WITH HEATSINK FOAM IN THE GAP, (Eg DIGIKEY BER225)
- CONNECTING THE SLEEP BAR INPUT TO GROUND WILL REDUCE THE CURRENT CONSUMPTION TO 2mA

MATING CONNECTORS:

MATING CONNECTORS (SUPPLIED BY ALLMOTION)
 4PIN HIROSE DF11-4DS-2C DIGIKEY P/N H2019
 12 PIN HIROSE DF11-12DS-2C DIGIKEY P/N H2024-ND
 PINS HIROSE DF11-2428SC DIGIKEY P/N H2139

DIMENSIONS:

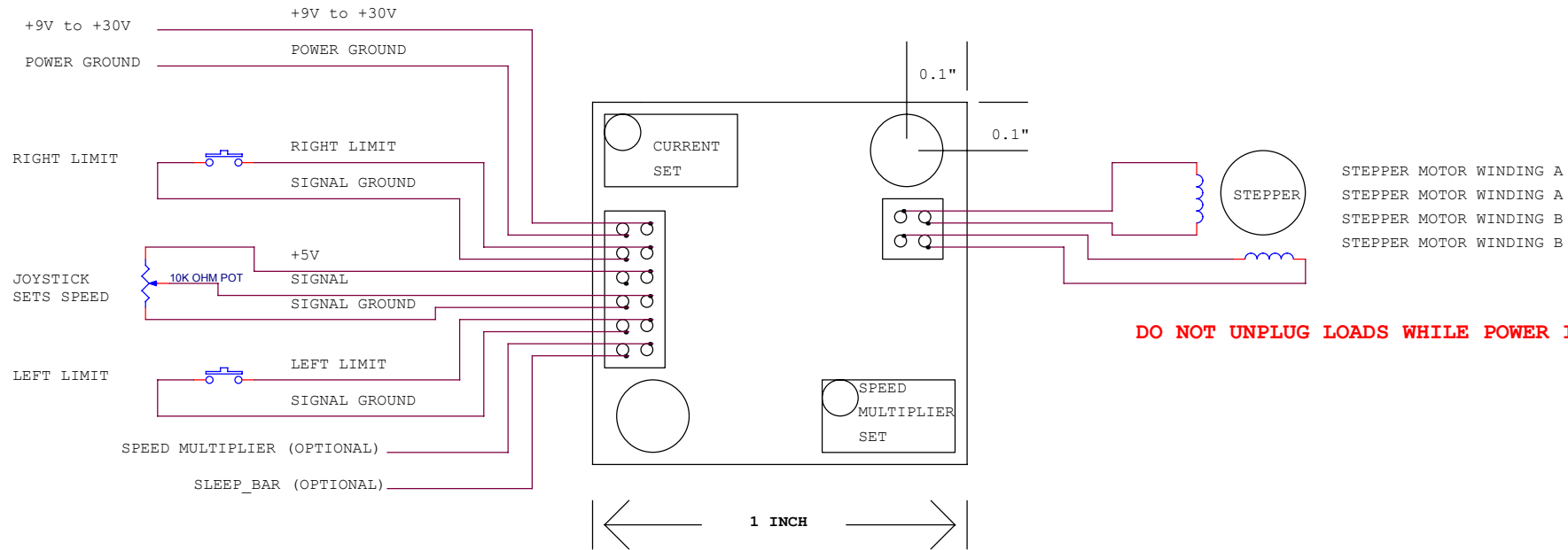
1" X 1" X 0.5" THICK
 MOUNTING HOLES ARE 2-56

INTELLI-INCH WIRING DIAGRAM

Title ALLMOTION.COM WIRING DIAGRAM		
Size B	Document Number DOCUMENT_REV_A4	Rev A5
Date: Tuesday, October 14, 2008 Sheet 1 of 3		

↓ **PAGE DOWN** ↓

COPYRIGHT ALLMOTION.COM



JOYSTICK MODEL
MODEL#: INTELLI-INCH-JY

NOTES:

- SPEED IS SET BY THE EXTERNAL POT (OR VOLTAGE) WITH 2.5V BEING ZERO VELOCITY, THERE IS A CENTER DEADBAND FROM 2.42V TO 2.58V. A SPECIAL VERSION WITH NO DEADBAND IS AVAILABLE IF DESIRED.
- EXTERNAL POT CAN BE 500 OHM TO 10K. LONG CABLE RUNS MAY REQUIRE A DECOUPLING WITH 0.1uF TO GROUND AT THE BOARD.
- THE ON BOARD POT SETS THE SPEED MULTTIPLIER AND HENCE SETS THE MAXIMUM SPEED WHEN THE JOYSTICK POT IS AT ITS LIMITS. THE SPEED MULTIPLIER CAN ALSO BE SET BY REMOVING THE ON BOARD POT AND FEEDING A 0-5V SIGNAL ON THE INPUT INDICATED.
- ACCELERATION CAN BE CHANGED BY CHANGING A FIXED RESISTOR ON THE PCB CONTACT FACTORY FOR DETAILS
- THE LIMIT SWITCHES SHOULD BE NORMALLY CLOSED
- DRIVE CAN BE MODIFIED FOR 2 AMPS, BUT WILL REQUIRE BOLTING AGAINST A HEATFIN OR ALUMINUM PLATE WITH HEATSINK FOAM IN THE GAP, (Eg DIGIKEY BER225)
- CONNECTING THE SLEEP BAR INPUT TO GROUND WILL REDUCE THE CURRENT CONSUMPTION TO 2mA

MATING CONNECTORS:

- MATING CONNECTORS (SUPPLIED BY ALLMOTION)**
- 4PIN HIROSE DF11-4DS-2C DIGIKEY P/N H2019
- 12 PIN HIROSE DF11-12DS-2C DIGIKEY P/N H2024-ND
- PINS HIROSE DF11-2428SC DIGIKEY P/N H2139

DIMENSIONS:

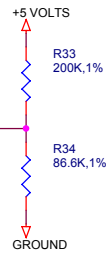
- 1" X 1" X 0.5" THICK
- MOUNTING HOLES ARE 2-56

INTELLI-INCH WIRING DIAGRAM

Title		
ALLMOTION.COM WIRING DIAGRAM		
Size	Document Number	Rev
B	DOCUMENT_REV_A4	A5
Date:	Tuesday, October 14, 2008	Sheet 2 of 3

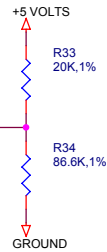
COPYRIGHT ALLMOTION.COM

ACCN
SET
VOLTAGE

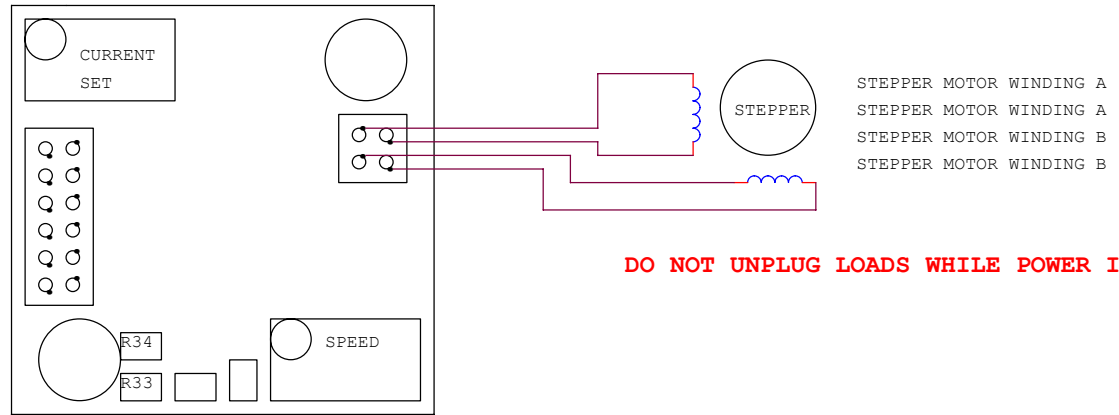


DEFAULT VALUES
FOR -LR MODEL

ACCN
SET
VOLTAGE



DEFAULT VALUES
FOR -JY MODEL



TO SET ACCELERATION:

ACCELERATION IS SET BY THE VOLTAGE AT THE JUNCTION OF R33 AND R34. HIGHER VOLTAGES GIVE FASTER ACCELERATIONS.

THE ACCELERATION CAN BE CHANGED BY CHANGING ONE OR THE OTHER RESISTOR. THESE RESISTORS ARE 0402 SIZE

FOR EXAMPLE REMOVING R34 WILL GIVE MAX ACCN

INTELLI-INCH WIRING DIAGRAM

Title		
ALLMOTION.COM WIRING DIAGRAM		
Size	Document Number	Rev
B	DOCUMENT_REV_A4	A5
Date: Tuesday, October 14, 2008		
Sheet		3 of 3

COPYRIGHT ALLMOTION.COM